

**TURBO HD 3.0**  
ANALOG SOLUTION



You can rely on Hikvision video surveillance products to meet your security needs.  
Our professional partners will be happy to provide you with any information you need.

Distributed by:



**HIKVISION**

**Hikvision Europe**  
Dirk Storklaan 3  
2132 PX Hoofddorp  
The Netherlands  
T +31 23 5542770  
[info.eu@hikvision.com](mailto:info.eu@hikvision.com)



## TURBO HD 3.0 ANALOG SOLUTION

The launch of Hikvision's Turbo HD 3.0 solution marks the dawn of a new era: Supporting full HD video transmission via coaxial cable and providing Tribrid compatibility, this revolutionary technology represents a real breakthrough in the evolution of analog transmission. The Turbo HD 3.0 product family includes a comprehensive range of Full HD cameras and DVRs that offer seamless compatibility with all video formats, from analog to HDTVI and IP Megapixel.



## TURBO HD 3.0 TRIBRID CAPABILITY

The Hikvision Turbo HD 3.0 line offers Tribrid capability – a true revolution in the professional surveillance market. Turbo HD 3.0 DVRs can process video signals from analog, HDTVI and AHD, CIF, WD, and IP megapixel cameras and allow for the seamless integration of different technologies, and thanks to autosensing technology, it's all automatic and installation is a breeze. Now users can upgrade their systems to enjoy 1080p image quality without replacing their current wiring, making Turbo HD 3.0 DVRs the definitive solution for back end requirements.



## TURBO HD 3.0 PLUG & PLAY OVER COAX

Remote OSD menu control and PTZ control of Speed Domes have never been this easy! Hikvision's Turbo HD 3.0 solution supports UTC for remote set-up and configuration. Since video signals and data can be transmitted through the same coaxial cable, no additional cables (RS485) are required and everything is automatically connected through Plug & Play technology. The cameras in the Turbo HD 3.0 series offer both standard analog and HD connectivity and can be integrated into any kind of setup, new or existing. That all translates into exceptional flexibility and ease of installation compared to conventional analog systems, allowing users to benefit from superior HD image quality without increasing costs.



# HD-TVI

## THE BENEFITS OF OPEN TECHNOLOGY

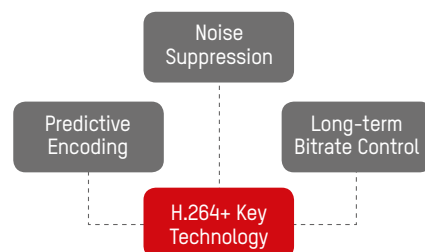
At Hikvision, we are committed to making versatile products that can adapt flexibly to changing needs, and as video technology continues to evolve, we are always working on new solutions that offer more extensive compatibility. That's why we based our Turbo HD 3.0 products on HDTVI technology, an open standard that enables different products and technologies to be integrated into a single system. This is a huge advantage in terms of system scalability, customers can simply incorporate the latest generation of HD products into their existing set-up.



# H.264+

## SAVE 50% BITRATE ON AVERAGE

Maximizing the memory of security systems is critical. But Hikvision is solving this problem, with H.264+. The "+" on our "H.264+" means a step up in efficiency from the standard H.264. The bit-rate is reduced by 50% on average while high transmission speed and image quality are maintained. That means more data becomes available, and it means more memory remains available in existing recording devices and computer systems.



# GREATER

## TRANSMISSION DISTANCE

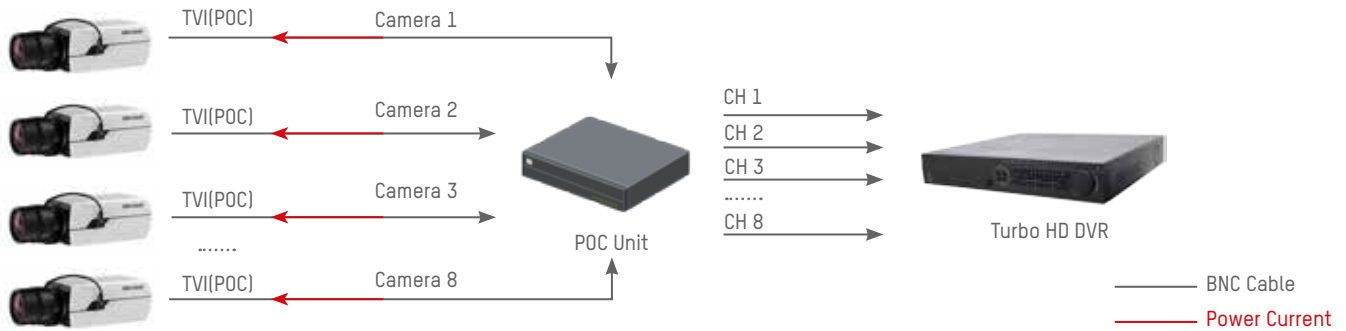
As any successful business grows, so does its need for extended security. Once a system has been installed, often the need for expansion raises. Using our HDTVI technology, you can manage much larger projects and satisfy the customer needs, or extend existing installations with high definition video while simultaneously increasing the transmission range.



The transmission distances can go up to 800m even when the existing coaxial cable infrastructure is used. The full value of the user's investment comes through in HD 1080p resolution. That means upgrades in both quality and size at the same time.

## EASIER INSTALLATION WITH POWER OVER COAX

Once the equipment has been selected, the next hurdle is the hardware installation process. This is usually the toughest part, but now it's gotten significantly easier. You can leave that existing coax cable right where it is. Hikvision's Power-over-Coax (POC) feature radically simplifies installation, as one coaxial cable carries both the video signal and the power supply. This translates to reduced installation time, which also translates to a reduction in both installation and material costs.



## UP TO 5MP

The Turbo HD Analog solution offers up to 5MP HDTV Camera input and 4K UHD HDMI video output. The HD video output is not just based on the performance of sensor, but the combination of the HD lens and Hikvision Image Signal Processing (ISP). HD lenses with low distortion and large apertures enable better low-light performance, while Hikvision ISP provides videos with greater detail and vibrant color.



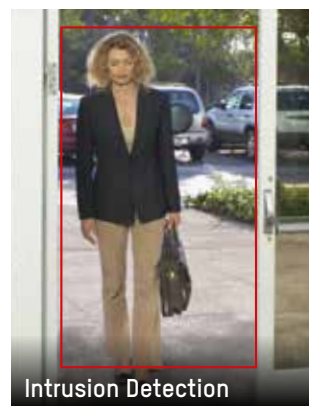
## TRIBRID SYSTEM

The Hikvision Turbo HD DVR offers simultaneous connections to IP, analog, Turbo HD and third-party AHD cameras. Existing systems can be upgraded by simply replacing the current group of cameras and DVRs, and also by adding IP network cameras to cover new areas. Alternatively, users can keep existing SD cameras and only upgrade the necessary surveillance points to HD. The Turbo HD solution offers seamless compatibility with various third-party HDTV compliant cameras and DVRs for superior flexibility.



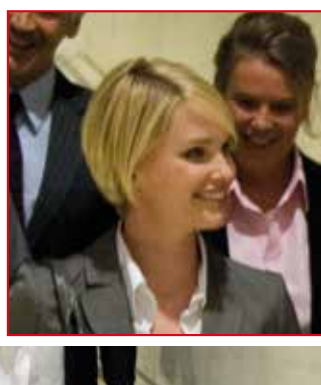
## SMART DETECTION

The Turbo HD DVR is equipped with smart features such as face detection, defocus detection, and video analytics including line crossing detection, intrusion detection, and scene change detection.



## HD LENS

Hikvision has professional lens division in R&D department from design to deployment.



## BIG APERTURE LENS

With big aperture, Hikvision Turbo HD cameras have better low light performance at night.



## LOW DISTORSION LENS

Hikvision Turbo HD cameras use HD lens with low distortion.



## HD ISP

Hikvision's ISP provides videos with more details and real color.



# A SOLUTION FOR EVERY MARKET



When chance is the name of the game, image quality can't be compromised. Hikvision technology offers smooth video image quality with ultra-high resolution and unparalleled colour accuracy. Where betting and quick movements are involved, perfect details need to be perfect if a client contests decisions at the gaming tables.



Hikvision solutions are an effective deterrent against intrusion and vandalism during hours when buildings are not in use. They play an important role in students' safety and Security so it is indispensable that images be sharp and clear, even in extremely low-light conditions.



Structures in the hospitality sector, where guests are received, stay, and relax, need Security services in all areas, from outside at entrances and car parks to inside in areas for wellness, fitness, and leisure activities. Hikvision guarantees maximum surveillance with maximum discretion.



Only a totally convergent surveillance system has what it takes to be an effective deterrent against theft, robberies or acts of vandalism, while at the same time, during business hours, acting as an excellent additional aid to marketing and visual merchandising for the analysis and reporting of retail performance.



Hikvision Solutions are designed with the needs of all areas of service stations in mind - from the forecourt to the kiosk to the carwash area. Sharp, clear images capture details of critical situations and signal any attempt at intrusion in sensitive areas.



A bank's main concern is keeping its clients' valuables safe. The design of solutions for this sector provides for gradual implementation of new technology and a high return on investment, with systems that conform to the strictest workers' privacy regulations.



**DS-2AE5123TI-A**  
720P Analog IR  
PTZ Dome Camera

- 1.3MP CMOS image sensor, HDTVI technology
- 720P video output
- 23X optical zoom, 16X digital zoom
- Up the coax function
- 3D DNR, BLC, ICR
- Up to 150m IR distance



**DS-2AE4123TI-D**  
720P Analog IR  
PTZ Dome Camera

- 1.3MP CMOS image sensor, HDTVI technology
- 720P video output
- 23X optical Zoom
- DWDR
- Up to 100m IR distance
- 3D intelligent positioning function
- Support Turbo HD and BNC output



**DS-2AE5230T-A**  
1080P Analog  
PTZ Dome Camera

- 2MP CMOS image sensor, HDTVI technology
- 1080P video output
- 30X optical zoom, 16X digital zoom
- Up the coax function
- Privacy masking
- 3D DNR, BLC, ICR



**DS-2AE5223TI-A**  
1080P Analog IR  
PTZ Dome Camera

- 2MP CMOS image sensor, HDTVI technology
- 1080P video output
- 23X optical zoom, 16X digital zoom
- Up the coax function
- Privacy Masking
- 3D DNR, BLC, ICR
- Up to 150m IR distance



**DS-2AE7230TI-A**  
1080P Analog IR  
PTZ Dome Camera

- 2MP CMOS image sensor, HDTVI technology
- 1080P video output
- 30X optical Zoom, 16X digital zoom
- Up the coax function
- Privacy masking
- 3D DNR, BLC, ICR function
- Up to 120m IR distance



**DS-2AE7123TI-A**  
E Series 7 inch IR  
Turbo HD 720p  
PTZ Dome Camera

- HD resolution 720p (1280 × 720@25fps)
- Lens: 4.0-92mm
- 23X optical zoom, 16X digital zoom
- Day and Night functionality
- IR illumination up to 120m
- Digital Wide Dynamic Range (WDR), 3D Digital Noise Reduction (DNR),
- Back Light Compensation (BLC)
- TurboHD and BNC output (TurboHD supports Control over Coax)
- Outdoor ready IP66
- 3RS-485 Protocols: HIKVISION, Pelco-P, Pelco-D, self-adaptive
- Power 24VAC, Max. 30W (IR: 9W, Heater: 6W)



## PRODUCT FEATURES



**DS-2CE56C0T-IRMM**  
**DS-2CE56C0T-IRP**  
Indoor IR  
Dome/Eyeball Cameras

- 1.0 MP high-performance CMOS
- Turbo HD output, up to 720P resolution
- True Day/Night
- DNR, Smart IR
- Up to 20m IR distance



**DS-2CE16C0T-IR(P)**  
**DS-2CE56C0T-IR(M)**  
Outdoor IR  
Bullet/Eyeball Cameras

- 1.0 MP high-performance CMOS
- Turbo HD output, up to 720P resolution
- True Day/Night
- DNR, Smart IR
- Up to 20m IR distance
- IP66 weatherproof



**DS-2CE16D0T-IR**  
Turbo HD 1080p IR  
Bullet Camera

- HD1080p Video
- Lens options: 3.6mm
- Adopt HDTVI Technology
- Day and Night functionality
- IR illumination up to 20m
- DNR, Smart IR
- Outdoor ready IP66
- Power 12 V DC



**DS-2CE56D0T-IRM**  
Turbo HD 1080P EXIR  
Turret Camera

- HD1080p Video
- Lens options: 3.6mm
- Adopt HDTVI Technology
- Day and Night functionality
- IR illumination up to 20m
- Smart IR
- IP66 weatherproof
- Power 12 V DC



**DS-2CE16C0T-3/5**  
Outdoor EXIR  
Bullet Camera

- 1.0 MP high-performance CMOS
- Turbo HD output, up to 720P resolution
- True Day/Night
- DNR, Smart IR
- Up to 40/80m IR distance with EXIR
- IP66 weatherproof



**DS-2CE56C0T-3**  
Outdoor EXIR  
Eyeball Camera

- 1.0 MP high-performance CMOS
- Turbo HD output, up to 720P resolution
- True Day/Night
- DNR, Smart IR
- Up to 20/40m IR distance with EXIR
- IP66 weatherproof



**DS-2CE56D0T-IT3**  
Turbo HD 1080P EXIR  
Turret Camera

- HD 1080p Video
- Lens options: 6mm, 3.6mm
- Adopt HDTV Technology
- Day and Night functionality
- IR illumination up to 40m
- Smart IR
- IP66 weatherproof
- Power 12 V DC



**DS-2CE16C2T-IT3/5**  
Outdoor EXIR  
Bullet Cameras

- Turbo HD output, up to 720P resolution
- Excellent low-light performance
- True Day/Night
- DNR, Smart IR
- Up to 40/80m IR distance with EXIR
- IP66 weatherproof



**DS-2CE16C2T-IR**  
**DS-2CE56C2T-IRM**  
Outdoor IR  
Bullet/Eyeball Cameras

- Turbo HD output, up to 720P resolution
- Excellent low-light performance
- True Day/Night
- DNR, Smart IR
- Up to 20m IR distance
- IP66 weatherproof



**DS-2CE16C2T-VFIR3**  
**DS-2CE56C2T-VFIR3**  
Outdoor Vari-focal  
Bullet/Mini Dome Cameras

- Turbo HD output, up to 720P resolution
- Excellent low-light performance
- True Day/Night
- DNR, Smart IR
- 2.8 - 12mm vari-focal lens
- Up to 40m IR distance
- IP66 weatherproof



**DS-2CE56C2T-IT3**  
Outdoor EXIR  
Eyeball Camera

- Turbo HD output, up to 720P resolution
- Excellent low-light performance
- True Day/Night
- DNR, Smart IR
- Up to 20/40m IR distance with EXIR
- IP66 weatherproof



**DS-2CE16C5T-(A)VFI3**  
**DS-2CE56C5T-VFIT3**  
Outdoor Vari-focal  
Bullet/Eyeball Cameras

- 1.3MP high-performance CMOS
- Turbo HD output, up to 720P resolution
- Excellent low-light performance
- True Day/Night
- 3D DNR, Smart IR
- 2.8 - 12mm vari-focal lens
- Up to 40/50m IR distance
- IP66 weatherproof

## PRODUCT FEATURES



**DS-2CE56C5T-AVPIR3**  
Outdoor Vandalproof  
IR Dome Camera

- 1.3MP high-performance CMOS
- Turbo HD output, up to 720P resolution
- Excellent low-light performance
- True Day/Night
- 3D DNR, Smart IR
- 2.8 – 12mm vari-focal lens
- Up to 40m IR distance
- IP66 weatherproof & Vandal Proof
- Dual voltage: 12 VDC / 24 VAC



**DS-2CE56D1T-VPIR**  
Indoor IR  
Eyeball Camera

- 2.0MP high-performance CMOS
- Turbo HD output, up to 1080P resolution
- True Day/Night
- DNR, Smart IR
- OSD menu controlled via UTC
- Up to 20m IR distance
- Vandal Proof (DS-2CE56D1T-VPIR)



**DS-2CE16D1T-IR**  
**DS-2CE56D1T-IRM**  
Outdoor IR  
Bullet/Eyeball Cameras

- 2.0MP high-performance CMOS
- Turbo HD output, up to 1080P resolution
- True Day/Night
- DNR, Smart IR
- OSD menu controlled via UTC
- Up to 20m IR distance
- IP66 weatherproof



**DS-2CE16F1T-IT**  
Turbo 3M EXIR  
Bullet Camera

- HD 3MP Video
- Lens: 2.8/3.6mm
- Adopt HDTV Technology
- IR illumination up to 20m
- DNR, Smart IR
- OSD menu
- IP66 weatherproof
- Power 12 V DC



**DS-2CE16D7T-IT**  
HD 1080P WDR EXIR  
Bullet Camera

- HD 1080p Video
- Lens options: 2.8mm, 3.6mm
- Adopt HDTV Technology
- Day and Night functionality
- IR illumination up to 20m
- DNR, Smart IR
- OSD menu
- IP66 weatherproof
- Power 12 V DC



**DS-2CE16D7T-IT3**  
HD1080P WDR EXIR  
Bullet Camera

- HD 1080p Video
- Lens options: 2.8mm, 3.6mm
- Adopt HDTV Technology
- Day and Night functionality
- IR illumination up to 40m
- DNR, Smart IR
- OSD menu
- IP66 weatherproof
- Power 12 V DC



**DS-2CE16F1T-IT3/5**  
HD 3MP EXIR  
Bullet Camera

- HD 3MP Video
- Lens-IT3 : 3.6mm
- -IT5 : 3.6mm, 6 mm
- Adopt HDTVI Technology
- IR illumination up to 40m/80m
- DNR, Smart IR
- OSD menu
- IP66 weatherproof
- Power 12 V DC



**DS-2CE16D1T-VFIR3**  
Turbo HD 1080P  
Vari-focal IR  
Bullet Camera

- HD 1080p Video
- Lens options: 2.8mm
- 12mm vari-focal lens
- Adopt HDTVI Technology
- Day and Night functionality
- IR illumination up to 80m
- DNR, Smart IR
- Outdoor ready IP66
- Power 4V AC/ 12V DC



**DS-2CE16D7T-AIT3Z**  
HD 1080P Motorized  
Vari-focal EXIR  
Bullet Camera

- HD 3MP Video
- Lens : Motorized Vari-Focal 2.8-12mm
- Adopt HDTVI Technology
- Day and Night functionality
- IR illumination up to 40m
- DNR, Smart IR
- OSD menu
- IP66 weatherproof
- Power 12 V DC/ 24V AC



**DS-2CE16D1T-IT3**  
Outdoor EXIR  
Bullet Camera

- 2.0MP high-performance CMOS
- Turbo HD output, up to 1080P resolution
- True Day/Night
- DNR, Smart IR
- OSD menu controlled via UTC
- Up to 40m IR distance with EXIR
- IP66 weatherproof



**DS-2CE56D7T-ITM**  
HD1080P WDR EXIR  
Turret Camera

- HD 1080p Video
- Lens options: 2.8mm, 3.6mm
- Adopt HDTVI Technology
- Day and Night functionality
- IR illumination up to 20m
- DNR, Smart IR
- OSD menu
- IP66 weatherproof
- Power 12 V DC



**DS-2CE56F1T-ITM**  
HD 3MP EXIR  
Eyeball Camera

- HD 3MP Video
- Lens 2.8/3.6mm
- Adopt HDTVI Technology
- IR illumination up to 20m
- DNR, Smart IR
- OSD menu
- Outdoor ready IP66
- IP66 weatherproof
- Power 12 V DC

## PRODUCT FEATURES



**DS-2CE56D7T-IT3**  
HD1080P WDR EXIR  
Turret Camera

- HD 1080p Video
- Lens options: 2.8mm, 3.6mm
- Adopt HDTVI Technology
- Day and Night functionality
- IR illumination up to 40m
- DNR, Smart IR
- OSD menu
- IP66 weatherproof
- Power 12 V DC



**DS-2CE56D1T-IT3**  
Outdoor EXIR  
Eyeball Camera

- 2.0MP high-performance CMOS
- Turbo HD output, up to 1080P resolution
- True Day/Night
- DNR, Smart IR
- OSD menu controlled via UTC
- Up to 40m IR distance with EXIR
- IP66 weatherproof



**DS-2CE56F1T-IT3**  
HD 3MP EXIR  
Eyeball Camera

- HD 3MP Video
- Lens options: 3.6mm
- Adopt HDTVI Technology
- IR illumination up to 40m
- DNR, Smart IR
- OSD menu
- IP66 weatherproof
- Power 12 V DC



**DS-2CE16D1T-(A)VFI3**  
**DS-2CE56D1T-VFI3**  
Outdoor Vari-focal  
Bullet/Eyeball Cameras

- 2.0MP high-performance CMOS
- Turbo HD output, up to 1080P resolution
- True Day/Night
- DNR, Smart IR
- OSD menu controlled via UTC
- 2.8 – 12mm vari-focal lens
- Up to 40m IR distance
- IP66 weatherproof



**DS-2CE16D5T-IR**  
**DS-2CE56D5T-IRM**  
Outdoor IR  
Bullet/Eyeball Cameras

- 2.0MP high-performance CMOS
- Turbo HD output, up to 1080P resolution
- True Day/Night
- True WDR, 3D DNR, Smart IR
- OSD menu
- Up to 20m IR distance
- IP66 weatherproof



**DS-2CE56D1T-AVPIR3**  
Outdoor Vandalproof  
IR Dome Camera

- 2.0MP high-performance CMOS
- Turbo HD output, up to 1080P resolution
- True Day/Night
- DNR, Smart IR
- OSD menu controlled via UTC
- 2.8 – 12mm vari-focal lens
- Up to 40m IR distance
- IP66 weatherproof & Vandal Proof
- Dual voltage: 12 VDC/ 24 VAC



**DS-2CE16D5T-IT3/5**  
Outdoor EXIR  
Bullet Cameras

- 2.0MP high-performance CMOS
- Turbo HD output, up to 1080P resolution
- True Day/Night
- True WDR, 3D DNR, Smart IR
- OSD menu
- Up to 40/80m IR distance with EXIR
- IP66 weatherproof



**DS-2CE16D0T-IT3/5**  
Turbo HD 1080p IR  
Bullet Camera

- HD1080p Video
- Lens options: 3.6mm, 6mm
- Adopt HDTVI Technology
- Day and Night functionality
- IR illumination up to 40m/80m
- DNR, Smart IR
- Outdoor ready IP66
- Power 12 V DC



**DS-2CE56D5T-IT3**  
Outdoor EXIR  
Eyeball Camera

- 1.3MP high-performance CMOS
- Turbo HD output, up to 720P resolution
- Excellent low-light performance
- True Day/Night
- 3D DNR, Smart IR
- 2.8 - 12mm vari-focal lens
- Up to 50m IR distance
- IP66 weatherproof



**DS-2CE56D5T-AVFIR**  
Indoor Vari-focal IR  
Dome Camera

- 2.0MP high-performance CMOS
- Turbo HD output, up to 1080P resolution
- True Day/Night
- True WDR, 3D DNR, Smart IR
- OSD menu
- 2.8 - 12mm vari-focal lens
- Up to 30m IR distance
- Dual voltage: 12 VDC/ 24 VAC



**DS-2CE16D5T-(A)VFIT3**  
**DS-2CE56D5T-VFIT3**  
Outdoor Vari-focal EXIR  
Bullet/Eyeball Cameras

- 2.0MP high-performance CMOS
- Turbo HD output, up to 1080P resolution
- True Day/Night
- True WDR, 3D DNR, Smart IR
- OSD menu
- 2.8 - 12mm vari-focal lens
- Up to 40/50m IR distance with EXIR
- IP66 weatherproof



**DS-2CE16D1T-AIR3Z**  
Motorized Lens  
Bullet Camera

- 2.0MP high-performance CMOS
- Turbo HD output, up to 1080P resolution
- True Day/Night
- DNR, Smart IR
- OSD menu controlled via UTC
- 2.8 - 12mm Motorized vari-focal lens
- Up to 40m IR distance
- IP66 weatherproof
- Dual voltage: 12 VDC/ 24 VAC



**DS-2CE56D5T-(A)VPIR3**  
Outdoor Vandalproof  
IR Dome Camera

- 2.0MP high-performance CMOS
- Turbo HD output, up to 1080P resolution
- True Day/Night
- True WDR, 3D DNR, Smart IR
- OSD menu
- 2.8 – 12mm vari-focal lens
- Up to 40m IR distance
- IP66 weatherproof & Vandal Proof
- Dual voltage: 12 VDC/ 24 VAC



**DS-2CE56D1T-IR3Z**  
Motorized Lens  
IR Eyeball Camera

- 2.0MP high-performance CMOS
- Turbo HD output, up to 1080P resolution
- True Day/Night
- DNR, Smart IR
- OSD menu controlled via UTC
- 2.8 – 12mm Motorized vari-focal lens
- Up to 40m IR distance
- IP66 weatherproof



**DS-2CE56D1T-(A)IRZ**  
Motorized Lens  
IR Dome Camera

- 2.0MP high-performance CMOS
- Turbo HD output, up to 1080P resolution
- True Day/Night
- DNR, Smart IR
- OSD menu controlled via UTC
- 2.8 – 12mm Motorized vari-focal lens
- Up to 40m IR distance
- IP66 weatherproof



**DS-2CE56D1T-AVPIR3(Z)**  
Motorized Lens  
IR Dome Camera

- 2.0MP high-performance CMOS
- Turbo HD output, up to 1080P resolution
- True Day/Night
- DNR, Smart IR
- OSD menu controlled via UTC
- 2.8 – 12mm Motorized vari-focal lens
- Up to 40m IR distance
- IP66 weatherproof & Vandal Proof
- Dual voltage: 12 VDC/ 24 VAC



**DS-2CE56D5T-AIRZ**  
Motorized Lens  
IR Dome Camera

- 2.0MP high-performance CMOS
- Turbo HD output, up to 1080P resolution
- True Day/Night
- True WDR, 3D DNR, Smart IR
- OSD menu
- 2.8 – 12mm Motorized vari-focal lens
- Up to 30m IR distance



**DS-2CE56D5T-IR3Z**  
Motorized Lens  
IR Eyeball Camera

- 2.0MP high-performance CMOS
- Turbo HD output, up to 1080P resolution
- True Day/Night
- True WDR, 3D DNR, Smart IR
- OSD menu
- 2.8 – 12mm Motorized vari-focal lens
- Up to 40m IR distance
- IP66 weatherproof



**DS-2CE56D5T-AVPIR3Z(H)**  
Motorized Lens  
IR Dome Camera

- 2.0MP high-performance CMOS
- Turbo HD output, up to 1080P resolution
- True Day/Night
- True WDR, 3D DNR, Smart IR
- OSD menu
- 2.8 - 12mm Motorized vari-focal lens
- Up to 40m IR distance
- IP66 weatherproof & Vandal Proof
- Built-in Heater (DS-2CE56D5T-AVPIR3ZH)



**DS-2CE16D9T-AIRAZH**  
5-50mm Motorized lens  
Vari-focal  
IR Bullet Camera

- 2.0 MP high-performance CMOS
- Turbo HD output, up to 1080P resolution
- True Day/Night
- True WDR, 3D DNR, Smart IR
- OSD menu
- 5 - 50mm Motorized vari-focal auto focus lens
- Up to 120m IR distance
- IP66 weatherproof
- Built-in Heater



**DS-2CE16F7T-IT**  
**DS-2CE56F7T-ITM**  
Outdoor EXIR Bullet/Eyeball

- 3.0 MP high-performance CMOS
- Turbo HD output, up to 3MP(1920\*1536) resolution
- True Day/Night
- True WDR, Smart IR
- Up to 20m IR distance
- IP66 weatherproof



**DS-2CE56F7T-VPIT**  
Outdoor Vandalproof  
EXIR Dome

- 3.0 MP high-performance CMOS
- Turbo HD output, up to 3MP(1920\*1536) resolution
- True Day/Night
- True WDR, Smart IR
- Up to 20m IR distance
- Vandalproof & IP66 weatherproof



**DS-2CE16F7T-IT1/3/5**  
Outdoor EXIR Bullet

- 3.0 MP high-performance CMOS
- Turbo HD output, up to 3MP(1920\*1536) resolution
- True Day/Night
- True WDR, Smart IR
- 20/40/80m IR distance
- IP66 weatherproof



**DS-2CE56F7T-IT1/3**  
Outdoor EXIR Eyeball

- 3.0 MP high-performance CMOS
- Turbo HD output, up to 3MP(1920\*1536) resolution
- True Day/Night
- True WDR, Smart IR
- 20/40m IR distance
- IP66 weatherproof



## PRODUCT FEATURES



**DS-2CE16F7T-(A)IT3Z**  
Outdoor EXIR Motorized  
Vari-focal Bullet

- 3.0 MP high-performance CMOS
- Turbo HD output, up to 3MP(1920\*1536) resolution
- True Day/Night
- True WDR, Smart IR
- 2.8-12mm motorized Lens
- 40m IR distance
- IP66 weatherproof
- Dual voltage: 12 VDC/ 24 VAC (-A model only)



**DS-2CE56F7T-IT3Z**  
Outdoor EXIR Motorized Vari-  
focal Eyeball

- 3.0 MP high-performance CMOS
- Turbo HD output, up to 3MP(1920\*1536) resolution
- True Day/Night
- True WDR, Smart IR
- 2.8-12mm motorized Lens
- 40m IR distance
- IP66 weatherproof



**DS-2CE56F7T-(A)ITZ**  
Indoor EXIR Motorized  
Vari-focal Dome

- 3.0 MP high-performance CMOS
- Turbo HD output, up to 3MP(1920\*1536) resolution
- True Day/Night
- True WDR, Smart IR
- 2.8-12mm motorized Lens
- 30m IR distance
- Dual voltage: 12 VDC/ 24 VAC (-A model only)



**DS-2CE56F7T-(A)VPIT3Z**  
Outdoor EXIR Motorized  
Vari-focal Dome

- 3.0 MP high-performance CMOS
- Turbo HD output, up to 3MP(1920\*1536) resolution
- True Day/Night
- True WDR, Smart IR
- 2.8-12mm motorized Lens
- 40m IR distance
- Vandalproof & IP66 weatherproof
- Dual voltage: 12 VDC/ 24 VAC (-A model only)



**DS-2CE16F1T-IT**  
Outdoor EXIR Bullet

- 3.0 MP high-performance CMOS
- Turbo HD output, up to 3MP(1920\*1536) resolution
- True Day/Night & Smart IR
- Up to 20m IR distance
- IP66 weatherproof



**DS-2CE56F1T-ITM**  
Outdoor EXIR Eyeball

- 3.0 MP high-performance CMOS
- Turbo HD output, up to 3MP(1920\*1536) resolution
- True Day/Night & Smart IR
- Up to 20m IR distance
- IP66 weatherproof



**DS-2CE16F1T-IT1/3/5**  
Outdoor EXIR Bullet

- 3.0 MP high-performance CMOS
- Turbo HD output, up to 3MP(1920\*1536) resolution
- True Day/Night & Smart IR
- 20/40/80m IR distance
- IP66 weatherproof



**DS-2CE56F1T-IT1/3**  
Outdoor EXIR Eyeball

- 3.0 MP high-performance CMOS
- Turbo HD output, up to 3MP(1920\*1536) resolution
- True Day/Night & Smart IR
- 20/40m IR distance
- IP66 weatherproof



**DS-7204HQHI-F1/N/A**  
4 Channel Turbo HD  
Tribrid DVR (720p realtime)

- 4 Turbo HD/Analog self-adaptive interfaces input
- IP video input: 1 channel Up to 2.0MP resolution
- 1280×720P: 25(P)/30(N) fps/ch
- 1 SATA interface (up to 6TB of capacity per HDD)
- 1080P input: Up to 1080p lite real-time/720P input: 720P/VGA/WD1/4CIF/CIF
- Video Compression H.264 and H.264+ Alarm in/out: 4/1
- 2 × USB 2.0 and Audio in/out
- Network Interface 1 RJ45 10M/100Mbps self-adaptive Ethernet interface
- HDMI and VGA output at up to 1920×1080p resolution
- Power 12V DC ≤15W (without hard disks)



**DS-7208/16HQHI-F2/N/A**  
8 Channel Turbo HD  
Tribrid DVR (720p realtime)

- 8 Turbo HD/Analog self-adaptive interfaces input
- IP video input: 2 channel Up to 2.0MP resolution
- 1280×720P: 25(P)/30(N) fps/ch
- 2 SATA interface (up to 6TB of capacity per HDD)
- 720P input: 720P/VGA/WD1/4CIF/CIF
- Video Compression H.264 and H.264+ Alarm in/out: 8/4
- 2 × USB 2.0 and Audio in/out
- Network Interface 1 RJ45 10M/100Mbps self-adaptive Ethernet interface
- HDMI and VGA output at up to 1920×1080p resolution
- Power 12V DC ≤20W (without hard disks)



**DS-7216HQHI-F2/N/A**  
16 Channel Turbo HD  
Tribrid DVR (720p realtime)

- 16 Turbo HD/Analog self-adaptive interfaces input
- IP video input: 2 channel Up to 2.0MP resolution
- 1280×720P: 25(P)/30(N) fps/ch
- 2 SATA interface (up to 6TB of capacity per HDD)
- 720P input: 720P/VGA/WD1/4CIF/CIF
- Video Compression H.264 and H.264+ Alarm in/out: 16/4
- Audio in/out 1 USB 2.0 on the front panel, 1 USB 3.0 on the rear panel
- Network Interface 1 RJ45 10M/100M/1000M self-adaptive Ethernet interface
- HDMI and VGA output at up to 4K (3840 × 2160p) Power 12V DC ≤ 30W (without hard disks)



**DS-7204HUHI-F1/N**  
5MP/3MP 1U  
Turbo HD DVR

- ch video & 1-ch audio input
- HDTV/analogue/AHD/IP camera quadruple hybrid
- 12fps recording at 5MP and 15fps recording at 3MP
- Full channel recording at 1080P resolution
- HDMI output at up to 1920×1080P resolution(DS-7204HUHI-F1/N), support CVBS output
- 4K UHD output (DS-7208HUHI-F1/N)
- Long transmission distance over coax cable
- Front panel and alarm I/O optional
- 1 SATA, 2 USB 3.0

## PRODUCT FEATURES



**DS-7208HUHI-F1/N**  
5MP/3MP 1U  
Turbo HD DVR

- 8-ch video & 1-ch audio input
- HDTV/analog/AHD/IP camera quadruple hybrid
- 12fps recording at 5MP and 15fps recording at 3MP
- Full channel recording at 1080P resolution
- HDMI output at up to 1920×1080P resolution(DS-7204HUHI-F2/N), support CVBS output
- 4K UHD output (DS-7208/16HUHI-F2/N)
- Long transmission distance over coax cable
- Front panel and alarm I/O optional
- 2 SATA, 2 USB 3.0



**DS-7204/08HGHI-SH**  
1080P 1U  
Turbo HD DVR

- 4/8-ch HD TVI/analog cameras video&audio input
- HD-TVI/analog/IP camera triple hybrid
- HD-TVI and analog cameras self-adaptive access
- Full channel@720P resolution real-time and 1080P no-real-time recording
- HDMI and VGA output at up to 1920×1080P resolution
- Long transmission distance over coax cable
- Front panel and alarm I/O optional
- 2 SATA(DS-7216HGHI-SH), 1 SATA(7204/08HGHI-SH), 2 USB2.0



**DS-7204HGHI-SH/A(EU)(B)**  
4 Channel Turbo HD  
Tribrid DVR  
(1080p non realtime)

- 4 Turbo HD/Analog self-adaptive interfaces input
- IP video input: 1 channel Up to 2.0MP resolution
- 1920×1080P: 12 fps/ch, 1280×720P: 25(P)/30(N) fps/ch
- 1 SATA interface (up to 6TB of capacity for each disk)
- Resolution: 1080p(non-real-time) 720p/VGA/WD1/4CIF/CIF
- Video Compression H.264
- 2 × USB 2.0 and Audio in/out
- Network Interface 1 RJ45 10M/100Mbps self-adaptive Ethernet interface
- HDMI and VGA output at up to 1920×1080p resolution
- Power 12V DC ≤ 15W (without hard disks)



**DS-7208HGHI-SH/A(EU)(B)**  
8 Channel Turbo HD  
Tribrid DVR  
(1080p non realtime)

- 8 Turbo HD/Analog self-adaptive interfaces input
- IP video input: 2 channel Up to 2.0MP resolution
- 1920×1080P: 12 fps/ch, 1280×720P: 25(P)/30(N) fps/ch
- 1 SATA interface (up to 6TB of capacity for each disk)
- Resolution:1080p(non-real-time) 720p/VGA/WD1/4CIF/CIF
- Video Compression H.264
- 2 × USB 2.0 and Audio in/out
- Network Interface 1 RJ45 10M/100Mbps self-adaptive Ethernet interface
- HDMI and VGA output at up to 1920×1080p resolution
- Power 12V DC ≤ 20W (without hard disks)



**DS-7216HGHI-SH/A(EU)(B)**  
16 Channel Turbo HD  
Tribrid DVR  
(1080p non realtime)

- 16 Turbo HD/Analog self-adaptive interfaces input
- IP video input: 2 channel Up to 2.0MP resolution
- 1920×1080P: 12 fps/ch, 1280×720P: 25(P)/30(N) fps/ch
- 2 SATA interface (up to 6TB of capacity for each disk)
- Resolution: 1080p(non-real-time) 720p/VGA/WD1/4CIF/CIF
- Video Compression H.264
- 2 × USB 2.0 and Audio in/out
- Network Interface 1 RJ45 10M/100M/1000M self-adaptive Ethernet interface
- HDMI and VGA output at up to 1920×1080p resolution
- Power 12V DC ≤ 30W (without hard disks)



**DS-7204HQHI-SH/A(EU)(B)**  
4 Channel Turbo HD  
Tribrid DVR  
(1080p realtime)

- 4 Turbo HD/Analog self-adaptive interfaces input
- IP video input: 1 channel Up to 2.0MP resolution
- 1920×1080P: 25(P)/30(N) fps/ch
- 1 SATA interface (up to 6TB of capacity for each disk)
- Resolution:1080p/720p/VGA/WD1/4CIF/CIF
- Video Compression H.264
- 2 × USB 2.0 and Audio in/out
- Network Interface 1 RJ45 10M/100Mbps self-adaptive Ethernet interface
- HDMI and VGA output at up to 1920×1080p resolution
- Power 12V DC ≤ 15W (without hard disks)



**DS-7208HQHI-SH/A(EU)(B)**  
8 Channel Turbo HD Tribrid DVR (1080p realtime)

- 8 Turbo HD/Analog self-adaptive interfaces input
- IP video input: 2 channel Up to 2.0MP resolution
- 1920×1080P: 25(P)/30(N) fps/ch
- 2 SATA interface (Up to 6TB capacity for each disk) Resolution:1080p/720p/VGA/WD1/4CIF/CIF
- Video Compression H.264
- 2 × USB 2.0 and Audio in/out
- Network Interface 1 RJ45 10M/100Mbps self-adaptive Ethernet interface
- HDMI and VGA output at up to 1920×1080p resolution
- Power 12V DC ≤ 20W (without hard disks)



**DS-7216HQHI-SH**  
16 Channel Turbo HD Tribrid DVR (1080p realtime)

- 16 Turbo HD/Analog self-adaptive interfaces input
- IP video input: 2 channel Up to 2.0MP resolution
- 1920×1080P: 25(P)/30(N) fps/ch
- 2 SATA interface (Up to 6TB capacity for each disk)
- Resolution:1080p/720p/VGA/WD1/4CIF/CIF
- Video Compression H.264
- 2 × USB 2.0 and Audio in/out
- Network Interface 1 RJ45 10M/100M/1000M self-adaptive Ethernet interface
- HDMI and VGA output at up to 1920×1080p resolution
- Power 12V DC ≤ 30W (without hard disks)



**DS-7308/16HQHI-SH**  
Full 1080P 1.5U Turbo HD DVR

- 8/16-ch HD TVI/analog cameras video&audio input
- HD-TVI/analog/IP camera triple hybrid
- HD-TVI and analog cameras self-adaptive access
- Full channel@1080P resolution real-time recording
- HDMI and VGA output at up to 1920×1080P resolution
- Long transmission distance over coax cable
- Gigabit network interfaces
- 4 SATA, 1 eSATA, 3 USB2.0



**DS-7308/16HQHI-F4/N**  
1080P 1.5U Turbo HD DVR

- 4/8/16-ch video & 4-ch audio input
- HDTV/analog/AHD/IP camera quadruple hybrid
- Full channel recording at 1080P resolution
- HDMI output at up to 1920×1080P resolution(DS-7304/08HQHI-F4/N), support CVBS output
- 4K UHD output (DS-7316HQHI-F4/N)
- Long transmission distance over coax cable
- 4 SATA, 1 eSATA, 3 USB2.0, gigabit NIC



**DS-8108/16HQHI-F8/N**  
1080P 2U Turbo HD DVR

- 4/8/16-ch video & audio input
- HDTV/analog/AHD/IP camera quadruple hybrid
- Full channel recording at 1080P resolution
- HDMI output at up to 1920×1080P resolution(DS-8104/08HQHI-F8/N), support CVBS output
- 4K UHD output (DS-8116HQHI-F8/N)
- Long transmission distance over coax cable
- 8 SATA, 1 eSATA, 3 USB2.0, gigabit NIC



**DS-7216HUHI-F2/N**  
Turbo HD DVR 4K video output

- 16-ch video input
- HDTV/analog/AHD/IP camera quadruple hybrid
- Full channel recoding at 1080P resolution
- 4K UHD output (up to 3840x2160/50Hz resolution)
- Long transmission distance over coax cable
- 2 SATA (max. 12TB), 2 USB



**DS-7604HI-ST/A**  
Embedded 4 channel  
Hybrid DVR

- Analog 4/8/16-ch video
- IP video input up to 8/16/32-ch
- Up to 5 MP resolution recording
- HDMI and VGA output
- Up to 1920x1080P
- Video compression H.264
- 1 SATA (max. 4TB)/ 2 SATA (max. 8TB), 2 USB



**DS-7608HI-ST/A**  
Embedded 8 channel  
Hybrid DVR

- Analog 4/8/16-ch video
- IP video input up to 8/16/32-ch
- Up to 5 MP resolution recording
- HDMI and VGA output
- Up to 1920x1080P
- Video compression H.264
- 1 SATA (max. 4TB)/ 2 SATA (max. 8TB), 2 USB



**DS-7616HI-ST/A**  
Embedded 16 channel  
Hybrid DVR

- Analog 4/8/16-ch video
- IP video input up to 8/16/32-ch
- Up to 5 MP resolution recording
- HDMI and VGA output
- Up to 1920x1080P
- Video compression H.264
- 1 SATA (max. 4TB)/ 2 SATA (max. 8TB), 2 USB



**DS-8108HQHI-SH**  
1080P 2U  
Turbo HD DVR

- 4/8/16-ch video & audio input
- HDTVI/analog/AHD/IP camera quadruple hybrid
- Full channel recording at 1080P resolution
- HDMI output at up to 1920x1080P resolution (DS-8104/08HQHI-F8/N), support CVBS output
- 4K UHD output (DS-8116HQHI-F8/N)
- Long transmission distance over coax cable
- 8 SATA, 1 eSATA, 3 USB2.0, gigabit NIC



**DS-8116HQHI-SH**  
1080P 2U  
Turbo HD DVR

- 4/8/16-ch video & audio input
- HDTVI/analog/AHD/IP camera quadruple hybrid
- Full channel recording at 1080P resolution
- HDMI output at up to 1920x1080P resolution (DS-8104/08HQHI-F8/N), support CVBS output
- 4K UHD output (DS-8116HQHI-F8/N)
- Long transmission distance over coax cable
- 8 SATA, 1 eSATA, 3 USB2.0, gigabit NIC



**DS-1TP04I**  
**DS-1TP08I**  
Turbo HD PoC Unit

- Video Input 4-ch / 8-ch
- Power Supply Distance 400m 75-5, 200m 75-3
- Chassis 1U
- Power 48 VDC
- Power Consumption ≤65 W

ACCESSORIES



**DS-1H18**  
Video Balun



**DS-1H33**  
HDTV to HDMI Converter



**X41T**  
Camera Tester



**DS-1H31**  
Distributer



NOTES

Ruled lines for taking notes

---

---

---

---

---

---

---

---

---

---

---

---

---

---

---

---

---

---

---

---

---

---

---

---

---

---